

## NCAM2 Polyclonal Antibody

**Catalog No.** E-AB-92561

*Note:* Centrifuge before opening to ensure complete recovery of vial contents.

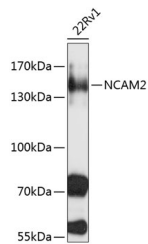
### Description

<b>Reactivity</b>	Human,Mouse,Rat
<b>Immunogen</b>	Recombinant fusion protein of human NCAM2
<b>Host</b>	Rabbit
<b>Isotype</b>	IgG
<b>Purification</b>	Affinity purification
<b>Conjugation</b>	Unconjugated
<b>Buffer</b>	PBS with 0.02% sodium azide,50% glycerol,pH7.3.

### Applications Recommended Dilution

**WB** 1:500-1:2000

### Data



Western blot analysis of extracts of 22Rv1 cells using NCAM2 Polyclonal Antibody at 1:1000 dilution.

**Observed Mw:140kDa**  
**Calculated Mw:47kDa/93kDa**

### Preparation & Storage

**Storage** Store at -20°C. Avoid freeze/thaw cycles.

### Background

The protein encoded by this gene belongs to the immunoglobulin superfamily. It is a type I membrane protein and may function in selective fasciculation and zone-to-zone projection of the primary olfactory axons.

### For Research Use Only