

## MYO1A Polyclonal Antibody

**Catalog No.** E-AB-92950

*Note:* Centrifuge before opening to ensure complete recovery of vial contents.

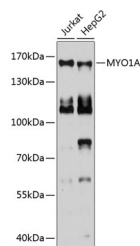
### Description

<b>Reactivity</b>	Human, Mouse
<b>Immunogen</b>	Recombinant fusion protein of human MYO1A
<b>Host</b>	Rabbit
<b>Isotype</b>	IgG
<b>Purification</b>	Affinity purification
<b>Conjugation</b>	Unconjugated
<b>Buffer</b>	PBS with 0.02% sodium azide, 50% glycerol, pH7.3.

### Applications Recommended Dilution

**WB** 1:500-1:2000

### Data



Western blot analysis of extracts of various cell lines using MYO1A Polyclonal Antibody at 1:1000 dilution.

**Observed Mw:160kDa**  
**Calculated Mw:118kDa**

### Preparation & Storage

**Storage** Store at -20°C. Avoid freeze/thaw cycles.

### Background

This gene encodes a member of the myosin superfamily. The protein represents an unconventional myosin; it should not be confused with the conventional skeletal muscle myosin-1 (MYH1). Unconventional myosins contain the basic domains characteristic of conventional myosins and are further distinguished from class members by their tail domains. They function as actin-based molecular motors. Mutations in this gene have been associated with autosomal dominant deafness. Alternatively spliced variants have been found for this gene.

### For Research Use Only