

## PE Anti-Human CD194/CCR4 Antibody[L291H4]

<b>Catalog No.</b>	E-AB-F1366D	<b>Reactivity</b>	Human
<b>Storage</b>	Store at 2~8°C, Avoid freeze / thaw cycles	<b>Applications</b>	FCM

**Important Note:** Centrifuge before opening to ensure complete recovery of vial contents.

### Antigen Information

<b>Alternate Names</b>	CKR4, K5-5, CMKBR4, ChemR13, CC-CKR-4, MGC88293, HGCN:14099
<b>Uniprot ID</b>	P51679
<b>Gene ID</b>	1233
<b>Background</b>	CD194, also known as CCR4, is a CC chemokine receptor. It binds CCL17 and CCL22 and is expressed on a subset of T and B cells, basophils, monocytes, and NK cells. Human Th2 cells are characterized by the expression of CCR4 and CCR8, and these receptors are regulated differently during Th2 development. Human peripheral blood Tregs can be divided into two distinct populations based on the expression of CCR4. Freshly isolated Tregs express CCR4 and presumably represent memory-type Tregs, and CCR4- Tregs require CD3-mediated activation to acquire a regulatory activity. Depletion of CCR4+ T cells leads to Th1-type polarization of CD4+ T cells and augmentation of CD8+ T cell responses to tumor antigens. CCR4 and its ligands are important for the recruitment of memory T cells into the skin in various cutaneous immune diseases.

### Product Details

<b>Form</b>	Liquid
<b>Size</b>	20Tests/100Tests/100Tests×2
<b>Clone No.</b>	L291H4
<b>Host</b>	Mouse
<b>Isotype</b>	Mouse IgG1, κ
<b>Reactivity</b>	Human
<b>Application</b>	FCM
<b>Isotype Control</b>	<a href="#">PE Mouse IgG1, κ Isotype Control[MOPC-21] [Product E-AB-F09792D]</a>
<b>Storage Buffer</b>	Phosphate buffered solution, pH 7.2, containing 0.09% stabilizer and 1% protein protectant.
<b>Shipping</b>	Biological ice pack at 4 °C
<b>Stability &amp; Storage</b>	Keep as concentrated solution. Store at 2~8°C and protected from prolonged exposure to light.Do not freeze. This product is guaranteed up to one year from purchase.

### For Research Use Only

## Fluorophore

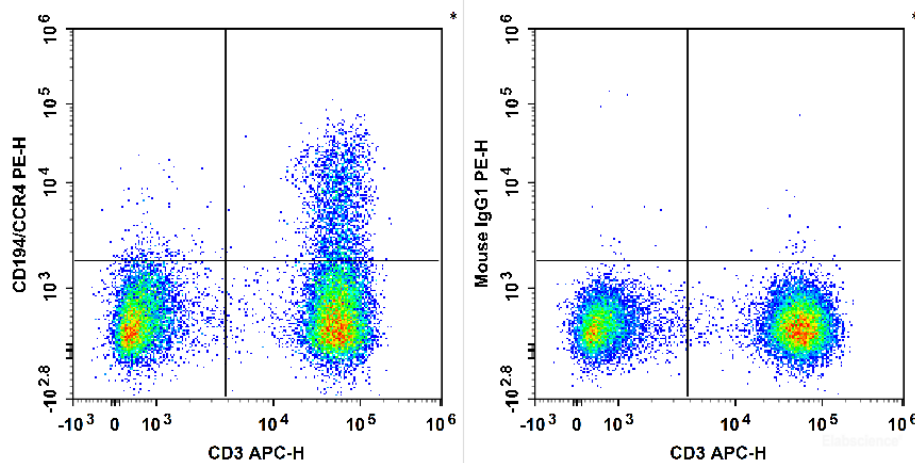
**Conjugation:** PE

PE is designed to be excited by the Blue (488 nm), Green (532 nm) and Yellow-Green (561 nm) lasers and detected using an optical filter centered near 575 nm (e.g., a 585/42 nm bandpass filter).

## Recommended usage

Each lot of this antibody is quality control tested by flow cytometric analysis. **The amount of the reagent is suggested to be used 5  $\mu$ L of antibody per test (million cells in 100  $\mu$ L staining volume or per 100  $\mu$ L of whole blood).** Please check your vial before the experiment. Since applications vary, the appropriate dilutions must be determined for individual use.

## Product data



Human peripheral blood lymphocytes are stained with APC Anti-Human CD3 Antibody and PE Anti-Human CD194/CCR4 Antibody[L291H4] (Left). Lymphocytes are stained with APC Anti-Human CD3 Antibody and PE Mouse IgG1,  $\kappa$  Isotype Control (Right).

## Related Information

1. Sample Preparation for Flow Cytometry <https://www.elabscience.com/List-detail-5594.html>
2. Staining Cell Surface Targets for Flow Cytometry <https://www.elabscience.com/List-detail-5568.html>
3. Flow Cytometry Troubleshooting Tips <https://www.elabscience.com/List-detail-5593.html>
4. How to select the appropriate detection channel through the spectrogram? <https://www.elabscience.com/List-detail-459742.html>