

ENO2 Polyclonal Antibody

Catalog Number:D-AB-10203L



Note: Centrifuge before opening to ensure complete recovery of vial contents.

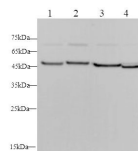
Description

Reactivity	Human,Mouse,Rat
Immunogen	Recombinant Human ENO2 protein expressed by E.coli
Host	Rabbit
Isotype	IgG
Purification	Antigen Affinity Purification
Conjugation	Unconjugated
Formulation	PBS with 0.02% sodium azide, 50% glycerol, pH 7.4

Applications Recommended Dilution

WB	1:500-1:1000
-----------	--------------

Data



Western blot with ENO2 Polyclonal antibody at dilution of 1:500.lane 1:SH-SY5Y whole cell lysate,lane 2:HeLa whole cell lysate,lane 3:Mouse brain,lane 4:Rat brain

Observed Mw:47kDa
Calculated Mw:47kDa

Preparation & Storage

Storage Store at -20°C. Avoid freeze / thaw cycles.

Background

Enolase 2(2-phospho-D-glycerate hydrolyase; also Neuron-specific Enolase,NSE,neural enolase and gamma-enolase) is a 46 kDa member of the Enolase family of enzymes. It is expressed in developing neurons and glia,is known to catalyze the generation of phosphoenolpyruvate,and is suggested to possess neurotrophic activity for neurons,likely through an extracellular mechanism. Human Enolase 2 is 434 amino acids(aa) in length. The enzymatic site spans most of the length of the molecule. Enolase 2 exists as both a noncovalently-linked homodimer,or heterodimer with alpha-enolase. Full-length human Enolase 2 shares 99% aa identity with both mouse and canine Enolase 2. It shares 83% aa identity with human enolases 1 and 3.

For Research Use Only

A Reliable Research Partner in Life Science and Medicine

Toll-free: 1-888-852-8623

Web: www.elabscience.com

Tel: 1-832-243-6086

Email: techsupport@elabscience.com

Fax: 1-832-243-6017