

Serpina1 Polyclonal Antibody

Catalog Number:D-AB-10209L

Note: Centrifuge before opening to ensure complete recovery of vial contents.

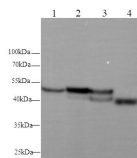
Description

Reactivity	Human,Mouse,Rat
Immunogen	Recombinant Rat Serpina1 protein expressed by E.coli
Host	Rabbit
Isotype	IgG
Purification	Antigen Affinity Purification
Conjugation	Unconjugated
Formulation	PBS with 0.02% sodium azide, 50% glycerol pH 7.4

Applications Recommended Dilution

WB	1:500-1000
-----------	------------

Data



Western blot with Serpina1 Polyclonal antibody at dilution of 1:500.lane 1:Hep G2 whole cell lysate,lane 2☐Mouse kidney,lane 3☐Mouse liver,lane 4☐Rat kidney,lane 5☐Rat liver

Observed Mw:43kDa,50kDa

Calculated Mw:46kDa

Preparation & Storage

Storage Store at -20°C. Avoid freeze / thaw cycles.

Background

SERPINA1 is the gene for a protein called alpha-1-antitrypsin (AAT),which is a serine protease inhibitor whose targets include elastase,plasmin,thrombin,trypsin,chymotrypsin,and plasminogen activator. AAT is a glycoprotein synthesized primarily by hepatocytes,with smaller amountssynthesized by intestinal epithelial cells,neutrophils,pulmonary alveolar cells and macrophages. AAT is the most abundant,endogenous serine protease inhibitor in blood circulation and it has been implicated in regulating vital fluid phase biological events such as blood coagulation,fibrinolysis,complement activation,apoptosis,reproduction,tumor progression and inflammatory response. The primary function of AAT is thought to be the inactivation of neutrophil elastase and other endogenous serine proteases. Defects in SERPINA1 can cause emphysema or liver disease.

For Research Use Only

A Reliable Research Partner in Life Science and Medicine

Toll-free: 1-888-852-8623

Web: www.elabscience.com

Tel: 1-832-243-6086

Email: techsupport@elabscience.com

Fax: 1-832-243-6017