

E-Cadherin Polyclonal Antibody

Catalog Number:D-AB-10198L



Note: Centrifuge before opening to ensure complete recovery of vial contents.

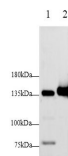
Description

Reactivity	Human,Mouse,Rat
Immunogen	Recombinant Human E-Cadherin protein expressed by E.coli
Host	Rabbit
Isotype	IgG
Purification	Antigen Affinity Purification
Conjugation	Unconjugated
Formulation	PBS with 0.02% sodium azide,50% glycerol pH 7.4

Applications Recommended Dilution

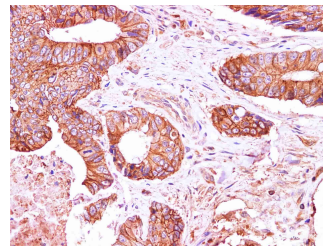
WB	1:500-1:1000
IHC	1:100-1:200

Data

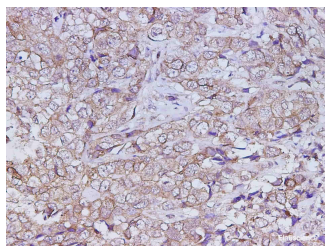


Western blot with E-Cadherin Polyclonal antibody at dilution of 1:1000.lane 1:Mouse spleen,lane 2 Rat brain

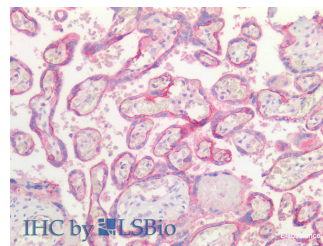
Observed Mw:135kDa
Calculated Mw:97kDa



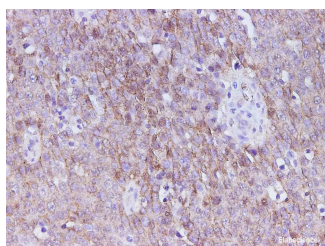
Immunohistochemistry of paraffin-embedded Human carcinoma of Colon using E-Cadherin Polyclonal Antibody at dilution of 1:100



Immunohistochemistry of paraffin-embedded Human breast cancer using E-Cadherin Polyclonal Antibody at dilution of 1:200



Immunohistochemistry of paraffin-embedded Human Placenta using E-Cadherin Polyclonal Antibody at dilution of 1:100(Elabscience Product)



For Research Use Only

A Reliable Research Partner in Life Science and Medicine

Toll-free: 1-888-852-8623

Web: www.elabscience.com

Tel: 1-832-243-6086

Email: techsupport@elabscience.com

Fax: 1-832-243-6017

E-Cadherin Polyclonal Antibody

Catalog Number:D-AB-10198L



Immunohistochemistry of paraffin-embedded
Human ovarian cancer using E-Cadherin Polyclonal
Antibody at dilution of 1:200

Preparation & Storage

Storage Store at -20°C. Avoid freeze / thaw cycles.

Background

This gene is a classical cadherin from the cadherin superfamily. The encoded protein is a calcium dependent cell-cell adhesion glycoprotein comprised of five extracellular cadherin repeats, a transmembrane region and a highly conserved cytoplasmic tail. Mutations in this gene are correlated with gastric, breast, colorectal, thyroid and ovarian cancer. Loss of function is thought to contribute to progression in cancer by increasing proliferation, invasion, and/or metastasis. The ectodomain of this protein mediates bacterial adhesion to mammalian cells and the cytoplasmic domain is required for internalization. Identified transcript variants arise from mutation at consensus splice sites.

For Research Use Only

A Reliable Research Partner in Life Science and Medicine

Toll-free: 1-888-852-8623

Web: www.elabscience.com

Tel: 1-832-243-6086

Email: techsupport@elabscience.com

Fax: 1-832-243-6017