

# CEACAM1 Polyclonal Antibody

Catalog Number:D-AB-10183L



**Note:** Centrifuge before opening to ensure complete recovery of vial contents.

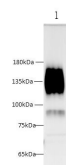
## Description

<b>Reactivity</b>	Human,Mouse
<b>Immunogen</b>	Recombinant Mouse Ceacam1 protein expressed by E.coli
<b>Host</b>	Rabbit
<b>Isotype</b>	IgG
<b>Purification</b>	Antigen Affinity Purification
<b>Conjugation</b>	Unconjugated
<b>Formulation</b>	PBS with 0.02% sodium azide, 50% glycerol pH 7.4

## Applications Recommended Dilution

<b>WB</b>	1:200-1:500
<b>IF</b>	1:50-1:200
<b>IHC</b>	1:250-1:500

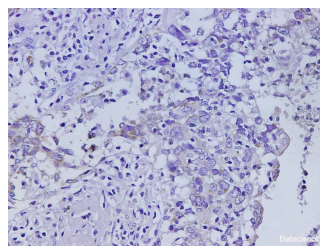
## Data



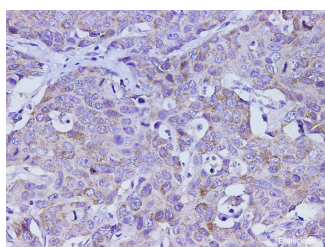
Western blot with Ceacam1 Polyclonal antibody at dilution of 1:500.lane 1:Mouse colon

**Observed Mw:110-160kDa**

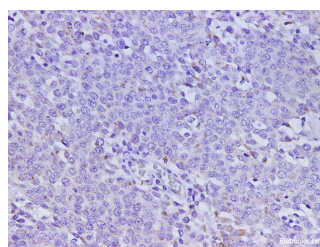
**Calculated Mw:57kDa**



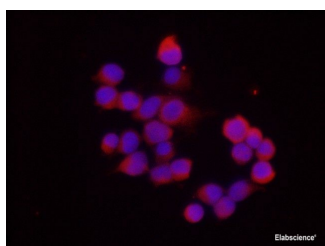
Immunohistochemistry of paraffin-embedded Human lung cancer using Ceacam1 Polyclonal Antibody at dilution of 1:500



Immunohistochemistry of paraffin-embedded Human stomach cancer using Ceacam1 Polyclonal Antibody at dilution of 1:500



Immunohistochemistry of paraffin-embedded Human ovarian cancer using Ceacam1 Polyclonal Antibody at dilution of 1:500



## For Research Use Only

A Reliable Research Partner in Life Science and Medicine

Toll-free: 1-888-852-8623

Web: [www.elabscience.com](http://www.elabscience.com)

Tel: 1-832-243-6086

Email: [techsupport@elabscience.com](mailto:techsupport@elabscience.com)

Fax: 1-832-243-6017

# CEACAM1 Polyclonal Antibody

Catalog Number: D-AB-10183L



Immunofluorescent analysis of 293F cells transfected with the Hep G2, using anti Ceacam1 Polyclonal Antibody at dilution of 1:200.

## Preparation & Storage

**Storage** Store at -20°C. Avoid freeze / thaw cycles.

## Background

This gene encodes a member of the carcinoembryonic antigen (CEA) gene family, which belongs to the immunoglobulin superfamily. Two subgroups of the CEA family, the CEA cell adhesion molecules and the pregnancy-specific glycoproteins, are located within a 1.2 Mb cluster on the long arm of chromosome 19. Eleven pseudogenes of the CEA cell adhesion molecule subgroup are also found in the cluster. The encoded protein was originally described in bile ducts of liver as biliary glycoprotein. Subsequently, it was found to be a cell-cell adhesion molecule detected on leukocytes, epithelia, and endothelia. The encoded protein mediates cell adhesion via homophilic as well as heterophilic binding to other proteins of the subgroup.

## For Research Use Only

A Reliable Research Partner in Life Science and Medicine

Toll-free: 1-888-852-8623

Web: [www.elabscience.com](http://www.elabscience.com)

Tel: 1-832-243-6086

Email: [techsupport@elabscience.com](mailto:techsupport@elabscience.com)

Fax: 1-832-243-6017