

GSTp1 Polyclonal Antibody

Catalog Number:D-AB-10211L

Note: Centrifuge before opening to ensure complete recovery of vial contents.

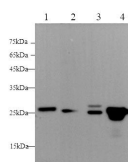
Description

Reactivity	Human,Mouse,Rat
Immunogen	Recombinant Rat Gstp1 protein expressed by E.coli
Host	Rabbit
Isotype	IgG
Purification	Antigen Affinity Purification
Conjugation	Unconjugated
Formulation	PBS with 0.02% sodium azide, 50% glycerol pH 7.4

Applications Recommended Dilution

WB	1:500-1000
-----------	------------

Data



Western blot with Gstp1 Polyclonal antibody at dilution of 1:500.lane 1:K562 whole cell lysate,lane 2☐Mouse lung,lane 3☐Rat brain,lane 4☐Rat kidney

Observed Mw:25kDa
Calculated Mw:23kDa

Preparation & Storage

Storage Store at -20°C. Avoid freeze / thaw cycles.

Background

Glutathione S-transferases (GSTs) are a family of enzymes that play an important role in detoxification by catalyzing the conjugation of many hydrophobic and electrophilic compounds with reduced glutathione. Based on their biochemical, immunologic, and structural properties, the soluble GSTs are categorized into 4 main classes: alpha, mu, pi, and theta. This GST family member is a polymorphic gene encoding active, functionally different GSTP1 variant proteins that are thought to function in xenobiotic metabolism and play a role in susceptibility to cancer, and other diseases.

For Research Use Only

A Reliable Research Partner in Life Science and Medicine

Toll-free: 1-888-852-8623

Web: www.elabscience.com

Tel: 1-832-243-6086

Email: techsupport@elabscience.com

Fax: 1-832-243-6017