

# ANXA5 Polyclonal Antibody

Catalog Number:D-AB-10212L



**Note:** Centrifuge before opening to ensure complete recovery of vial contents.

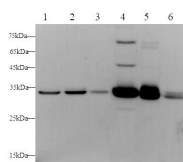
## Description

<b>Reactivity</b>	Human,Mouse,Rat
<b>Immunogen</b>	Recombinant Mouse Anxa5 protein expressed by E.coli
<b>Host</b>	Rabbit
<b>Isotype</b>	IgG
<b>Purification</b>	Antigen Affinity Purification
<b>Conjugation</b>	Unconjugated
<b>Formulation</b>	PBS with 0.02% sodium azide, 50% glycerol pH 7.4

## Applications Recommended Dilution

<b>WB</b>	1:500-1000
-----------	------------

## Data



Western blot with Anxa5 Polyclonal antibody at dilution of 1:500.lane 1:Helena whole cell lysate,lane 2[A431 whole cell lysate,lane 3[293 T whole cell lysate,lane 4[NIH/3T3 whole cell lysate,lane 5[C6 whole cell lysate,lane 6[Rat stomach

**Observed Mw:34kDa**  
**Calculated Mw:36kDa**

## Preparation & Storage

**Storage** Store at -20°C. Avoid freeze / thaw cycles.

## Background

This protein is an anticoagulant protein that acts as an indirect inhibitor of the thromboplastin-specific complex, which is involved in the blood coagulation cascade.

## For Research Use Only

A Reliable Research Partner in Life Science and Medicine

Toll-free: 1-888-852-8623

Web: [www.elabscience.com](http://www.elabscience.com)

Tel: 1-832-243-6086

Email: [techsupport@elabscience.com](mailto:techsupport@elabscience.com)

Fax: 1-832-243-6017