

CD38 Polyclonal Antibody

Catalog Number:D-AB-10189L

Note: Centrifuge before opening to ensure complete recovery of vial contents.

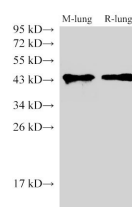
Description

Reactivity	Human,Mouse,Rat
Immunogen	Recombinant Human CD38 protein expressed by E.coli
Host	Rabbit
Isotype	IgG
Purification	Antigen Affinity Purification
Conjugation	Unconjugated
Formulation	PBS with 0.02% sodium azide, 50% glycerol pH 7.4

Applications Recommended Dilution

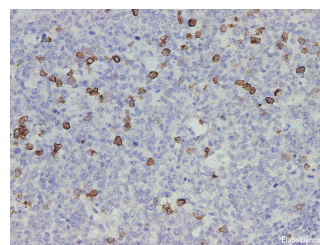
WB	1:500-1:2000
IHC	1:500-1:1000

Data

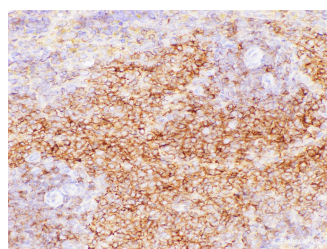


Western Blot analysis of Mouse lung and Rat lung using CD38 Polyclonal Antibody at dilution of 1:1000

Observed Mw:45 kDa
Calculated Mw:34 kDa



Immunohistochemistry of paraffin-embedded Human tonsil tissue using CD38 Polyclonal Antibody at dilution of 1:1000



Immunohistochemistry of paraffin-embedded Rat spleen using CD38 Polyclonal Antibody at dilution of 1:200

Preparation & Storage

Storage Store at -20°C. Avoid freeze / thaw cycles.

Background

CD38(cluster of differentiation38), also known as cyclic ADP ribose hydrolase is a glycoprotein found on the surface of many immune cells (white blood cells), including CD4+, CD8+, B lymphocytes and natural killer cells. CD38 also functions

For Research Use Only

A Reliable Research Partner in Life Science and Medicine

Toll-free: 1-888-852-8623

Web: www.elabscience.com

Tel: 1-832-243-6086

Email: techsupport@elabscience.com

Fax: 1-832-243-6017

CD38 Polyclonal Antibody

Catalog Number: D-AB-10189L



in cell adhesion, signal transduction and calcium signaling. In humans, the CD38 protein is encoded by the CD38 gene which is located on chromosome 4.

For Research Use Only

A Reliable Research Partner in Life Science and Medicine

Toll-free: 1-888-852-8623

Tel: 1-832-243-6086

Fax: 1-832-243-6017

Web: www.elabscience.com

Email: techsupport@elabscience.com