

# CD38 Polyclonal Antibody

Catalog Number:D-AB-10217L



**Note:** Centrifuge before opening to ensure complete recovery of vial contents.

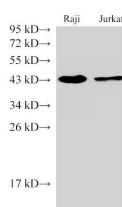
## Description

<b>Reactivity</b>	Human
<b>Immunogen</b>	Recombinant MACFA CD38 protein expressed by E.coli
<b>Host</b>	Rabbit
<b>Isotype</b>	IgG
<b>Purification</b>	Antigen Affinity Purification
<b>Conjugation</b>	Unconjugated
<b>Formulation</b>	PBS with 0.02% sodium azide, 50% glycerol pH 7.4

## Applications Recommended Dilution

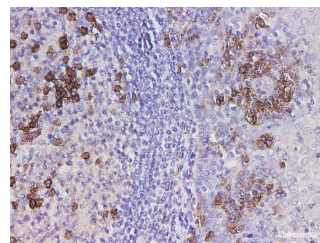
<b>WB</b>	1:500-1:2000
<b>IHC</b>	1:5000-1:10000

## Data



Western Blot analysis of Raji and Jurkat cells using CD38 Polyclonal Antibody at dilution of 1:1000

**Observed Mw:45 kDa**  
**Calculated Mw:13,34 kDa**



Immunohistochemistry of paraffin-embedded Human tonsil using CD38 Polyclonal Antibody at dilution of 1:5000

## Preparation & Storage

**Storage** Store at -20°C. Avoid freeze / thaw cycles.

## Background

CD38(cluster of differentiation38), also known as cyclic ADP ribose hydrolase is a glycoprotein found on the surface of many immune cells (white blood cells), including CD4+, CD8+, B lymphocytes and natural killer cells. CD38 also functions in cell adhesion, signal transduction and calcium signaling. In humans, the CD38 protein is encoded by the CD38 gene which is located on chromosome 4.

## For Research Use Only

A Reliable Research Partner in Life Science and Medicine

Toll-free: 1-888-852-8623

Web: [www.elabscience.com](http://www.elabscience.com)

Tel: 1-832-243-6086

Email: [techsupport@elabscience.com](mailto:techsupport@elabscience.com)

Fax: 1-832-243-6017