

CK-18 Polyclonal Antibody

Catalog Number:D-AB-10167L

Note: Centrifuge before opening to ensure complete recovery of vial contents.

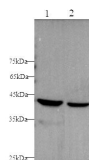
Description

Reactivity	Human
Immunogen	Recombinant Human KRT18 protein expressed by E.coli
Host	Rabbit
Isotype	IgG
Purification	Affinity purification
Conjugation	Unconjugated
Formulation	PBS with 0.02% sodium azide, 50% glycerol, pH7.3.

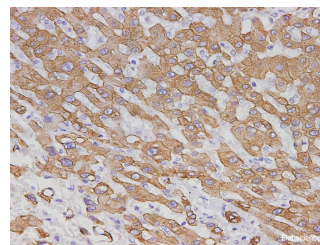
Applications Recommended Dilution

WB	1:5000-1:10000
IHC	1:500-1:1000

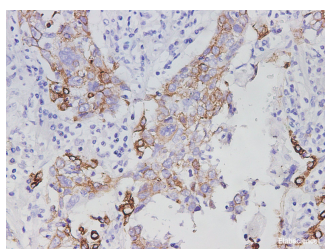
Data



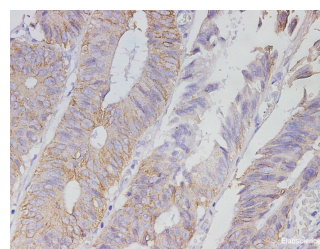
Western blot with AGR1 Polyclonal antibody at dilution of 1:5000.lane 1:Hela whole cell lysate, lane 2:A431 whole cell lysate
Observed Mw:45kDa
Calculated Mw:48kDa



Immunohistochemistry of paraffin-embedded Human liver cancer tissue using AGR1 Polyclonal Antibody at dilution of 1:2900



Immunohistochemistry of paraffin-embedded Human lung cancer tissue using AGR1 Polyclonal Antibody at dilution of 1:2900



Immunohistochemistry of paraffin-embedded Human colon cancer tissue using AGR1 Polyclonal Antibody at dilution of 1:2900

Preparation & Storage

Storage Store at -20°C. Avoid freeze / thaw cycles.

Background

Cytokeratin 18 (CK18) has a molecular weight of 45 KDa, which is a low molecular weight type A cytokeratin. It is a marker of simple epithelium, including glandular epithelium. The stratified squamous epithelium is generally negative.

For Research Use Only

A Reliable Research Partner in Life Science and Medicine

Toll-free: 1-888-852-8623

Web: www.elabscience.com

Tel: 1-832-243-6086

Email: techsupport@elabscience.com

Fax: 1-832-243-6017

CK-18 Polyclonal Antibody

Catalog Number: D-AB-10167L



CK18 is mainly used in the diagnosis of adenocarcinoma.

For Research Use Only

A Reliable Research Partner in Life Science and Medicine

Toll-free: 1-888-852-8623

Tel: 1-832-243-6086

Fax: 1-832-243-6017

Web: www.elabscience.com

Email: techsupport@elabscience.com