

## PE/Cyanine5 Anti-Human CD5 Antibody[HISM2]

|                    |  |                     |       |
|--------------------|--|---------------------|-------|
| <b>Catalog No.</b> | E-AB-F1313G                                | <b>Reactivity</b>   | Human |
| <b>Storage</b>     | Store at 2~8°C, Avoid freeze / thaw cycles | <b>Applications</b> | FCM   |

**Important Note:** Centrifuge before opening to ensure complete recovery of vial contents.

### Antigen Information

|                        |   |
|------------------------|---|
| <b>Alternate Names</b> | T-cell surface glycoprotein CD5,CD5,Lymphocyte antigen T1/Leu-1,LEU1  |
| <b>Uniprot ID</b>      | P06127  |
| <b>Gene ID</b>         | 921   |
| <b>Background</b>      | CD5 is a 67 kD single chain type I glycoprotein also known as Leu-1, Ly-1 and T1. It is a member of the scavenger receptor superfamily found on T cells, thymocytes, B cell subsets, chronic B lymphocytic leukemia (B-Cells), and peripheral blood dendritic cells. CD5 modulates T and B cell receptor signaling, thymocyte maturation, and T-B cell interactions upon binding to ligands such as CD72. |

### Product Details

|                                |  |
|--------------------------------|--|
| <b>Form</b>                    | Liquid   |
| <b>Size</b>                    | 20Tests/100Tests/100Tests×2  |
| <b>Clone No.</b>               | HISM2  |
| <b>Host</b>                    | Mouse  |
| <b>Isotype</b>                 | Mouse IgG1, κ  |
| <b>Reactivity</b>              | Human  |
| <b>Application</b>             | FCM  |
| <b>Isotype Control</b>         | <a href="#">[Product E-AB-F09792G]</a>   |
| <b>Storage Buffer</b>          | Phosphate buffered solution, pH 7.2, containing 0.09% stabilizer and 1% protein protectant.  |
| <b>Shipping</b>                | Biological ice pack at 4 °C  |
| <b>Stability &amp; Storage</b> | Keep as concentrated solution.<br>Store at 2~8°C and protected from prolonged exposure to light.Do not freeze.<br>This product is guaranteed up to one year from purchase. |

### For Research Use Only

## Fluorophore

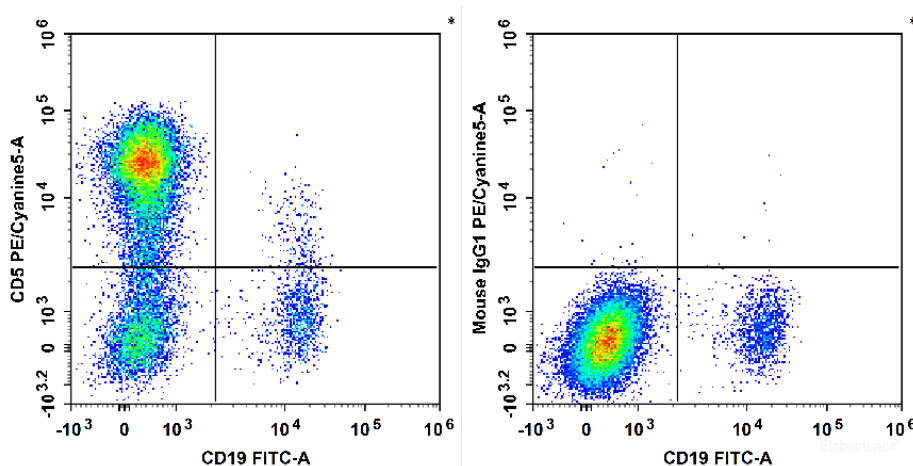
**Conjugation:** PE/Cyanine5

PE/Cyanine5 is designed to be excited by the Blue (488 nm), Green (532 nm) and yellow-green (561 nm) lasers and detected using an optical filter centered near 670 nm (e.g., a 690/50 nm bandpass filter).

## Recommended usage

Each lot of this antibody is quality control tested by flow cytometric analysis. **The amount of the reagent is suggested to be used 5  $\mu$ L of antibody per test (million cells in 100  $\mu$ L staining volume or per 100  $\mu$ L of whole blood).** Please check your vial before the experiment. Since applications vary, the appropriate dilutions must be determined for individual use.

## Product data



Human peripheral blood lymphocytes are stained with FITC Anti-Human CD19 Antibody and PE/Cyanine5 Anti-Human CD5 Antibody[HISM2] (Left). Lymphocytes are stained with FITC Anti-Human CD19 Antibody and PE/Cyanine5 Mouse IgG1,  $\kappa$  Isotype Control (Right).

## Related Information

1. Sample Preparation for Flow Cytometry <https://www.elabscience.com/List-detail-5594.html>
2. Staining Cell Surface Targets for Flow Cytometry <https://www.elabscience.com/List-detail-5568.html>
3. Flow Cytometry Troubleshooting Tips <https://www.elabscience.com/List-detail-5593.html>
4. How to select the appropriate detection channel through the spectrogram? <https://www.elabscience.com/List-detail-459742.html>