

GDF-8 Polyclonal Antibody

Catalog Number:D-AB-10385L



Note: Centrifuge before opening to ensure complete recovery of vial contents.

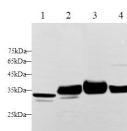
Description

Reactivity	Human,Mouse,Rat
Immunogen	Recombinant Human GDF-8 Protein expressed by E.coli
Host	Rabbit
Isotype	IgG
Purification	Antigen Affinity Purification
Conjugation	Unconjugated
Formulation	PBS with 0.02% sodium azide,50% glycerol pH 7.4

Applications Recommended Dilution

WB	1:500-1:1000
-----------	--------------

Data



Western blot with GDF-8 Polyclonal antibody at dilution of 1:1000.lane 1:HeLa whole cell lysate,lane 2:Mouse heart,lane 3:Rat heart,lane 4:Rat skeletal muscle

Observed Mw:35kDa-43kDa

Calculated Mw:43kDa

Preparation & Storage

Storage Store at -20°C. Avoid freeze / thaw cycles.

Background

Growth/differentiation factor 8(Mstn,GDF-8) is a member of the bone morphogenetic protein (BMP) family and the TGF-beta superfamily. This group of proteins is characterized by a polybasic proteolytic processing site which is cleaved to produce a mature protein containing seven conserved cysteine residues. It is expressed specifically in developing and adult skeletal muscle. It exists as a homodimer,and interacts with WFIKKN2,leading to inhibit its activity. This protein can act specifically as a negative regulator of skeletal muscle growth. It regulates cell growth and differentiation in both embryonic and adult tissues.

For Research Use Only

A Reliable Research Partner in Life Science and Medicine

Toll-free: 1-888-852-8623

Web: www.elabscience.com

Tel: 1-832-243-6086

Email: techsupport@elabscience.com

Fax: 1-832-243-6017