

Note: Centrifuge before opening to ensure complete recovery of vial contents.

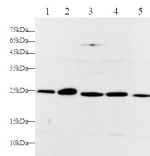
Description

Reactivity	Human,Mouse,Rat
Immunogen	Recombinant Human RAN RNF84 Protein expressed by E.coli
Host	Rabbit
Isotype	IgG
Purification	Antigen Affinity Purification
Conjugation	Unconjugated
Formulation	PBS with 0.02% sodium azide,50% glycerol pH 7.4

Applications Recommended Dilution

WB	1:500-1:1000
-----------	--------------

Data



Western blot with RAN Polyclonal Antibody at dilution of 1:1000.lane 1:HeLa whole cell lysate,lane 2:NIH/3T3 whole cell lysate,lane 3:HepG2 whole cell lysate,lane 4:Jurkat whole cell lysate,lane 5:PC-12 whole cell lysate

Observed Mw:24 kDa
Calculated Mw:24 kDa

Preparation & Storage

Storage Store at -20°C. Avoid freeze / thaw cycles.

Background

RAN (ras-related nuclear protein) is a small GTP binding protein belonging to the RAS superfamily that is essential for the translocation of RNA and proteins through the nuclear pore complex. The RAN protein is also involved in control of DNA synthesis and cell cycle progression. Nuclear localization of RAN requires the presence of regulator of chromosome condensation 1 (RCC1). Mutations in RAN disrupt DNA synthesis.

For Research Use Only

A Reliable Research Partner in Life Science and Medicine

Toll-free: 1-888-852-8623

Web: www.elabscience.com

Tel: 1-832-243-6086

Email: techsupport@elabscience.com

Fax: 1-832-243-6017