

Note: Centrifuge before opening to ensure complete recovery of vial contents.

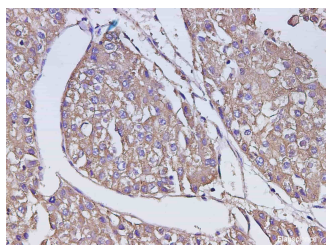
Description

Reactivity	Human
Immunogen	Recombinant Human AEP protein expressed by E.coli
Host	Rabbit
Isotype	IgG
Purification	Antigen Affinity Purification
Conjugation	Unconjugated
Formulation	PBS with 0.02% sodium azide,50% glycerol pH 7.4

Applications Recommended Dilution

IHC	1:300-1:600
------------	-------------

Data



Immunohistochemistry of paraffin-embedded Human liver cancer using AFP Polyclonal Antibody at dilution of 1:600

Preparation & Storage

Storage Store at -20°C. Avoid freeze / thaw cycles.

Background

Alpha-fetoprotein (AFP) is classified as a member of the albuminoid gene superfamily consisting of albumin,AFP,vitamin D (Gc) protein,and alpha-albumin. AFP is a glycoprotein of 591 amino acids and a carbohydrate moiety. AFP is one of the several embryo-specific proteins and is a dominant serum protein as early in human embryonic life as one month,when albumin and transferrin are present in relatively small amounts. It is first synthesized in the human by the yolk sac and liver(1-2 months) and subsequently predominantly in the liver. A small amount of AFP is produced by the GI tract of the human conceptus. It has been proved that AFP may reappear in the serum in elevated amounts in adult life in association with normal restorative processes and with malignant growth. Alpha-fetoprotein (AFP) is a specific marker for hepatocellular carcinoma (HCC),teratoblastomas,and neural tube defect (NTD).

For Research Use Only

A Reliable Research Partner in Life Science and Medicine

Toll-free: 1-888-852-8623

Web: www.elabscience.com

Tel: 1-832-243-6086

Email: techsupport@elabscience.com

Fax: 1-832-243-6017