

# Cyt-C Polyclonal Antibody

Catalog Number:D-AB-10419L

**Note:** Centrifuge before opening to ensure complete recovery of vial contents.

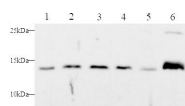
## Description

<b>Reactivity</b>	Human,Mouse
<b>Immunogen</b>	Recombinant Human Cyt-C protein expressed by E.coli
<b>Host</b>	Rabbit
<b>Isotype</b>	IgG
<b>Purification</b>	Antigen Affinity Purification
<b>Conjugation</b>	Unconjugated
<b>Formulation</b>	PBS with 0.02% sodium azide,50% glycerol pH 7.4

## Applications Recommended Dilution

<b>WB</b>	1:250-1:500
-----------	-------------

## Data



Western blot with Cyt-C Polyclonal antibody at dilution of 1:500.lane 1:HepG2 whole cell lysate,lane 2:MCF-7 whole cell lysate,lane 3:Jurkat whole cell lysate,lane 4:Molt-4 whole cell lysate,lane 5:C2C12 whole cell lysate,lane 6:Mouse brain

**Observed Mw:14kDa**  
**Calculated Mw:12kDa**

## Preparation & Storage

**Storage** Store at -20°C. Avoid freeze / thaw cycles.

## Background

Cytochrome c is a 12-15 kDa electron transporting protein located in the inner mitochondrial membrane. As a part of respiratory chain,cytochrome c plays a critical role in the process of oxidative phosphorylation and ATP producing. Besides,cytochrome c also gets implicated in apoptosis process. Upon apoptotic stimulation,cytochrome c can be released from mitochondria into cytoplasm,which is required for caspase-3 activation and the occurrence of apoptosis.

## For Research Use Only

A Reliable Research Partner in Life Science and Medicine

Toll-free: 1-888-852-8623

Web: [www.elabscience.com](http://www.elabscience.com)

Tel: 1-832-243-6086

Email: [techsupport@elabscience.com](mailto:techsupport@elabscience.com)

Fax: 1-832-243-6017