

SOD2 Polyclonal Antibody

Catalog Number:D-AB-10436L



Note: Centrifuge before opening to ensure complete recovery of vial contents.

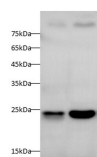
Description

Reactivity	Human,Mouse,Rat
Immunogen	Recombinant Human SOD2 protein expressed by E.coli
Host	Rabbit
Isotype	IgG
Purification	Antigen Affinity Purification
Conjugation	Unconjugated
Formulation	PBS with 0.02% sodium azide,1% protective protein and 50% glycerol,pH7.4

Applications Recommended Dilution

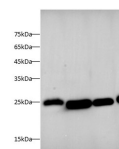
WB	1:500-1:1000
IHC	1:400-1:800

Data

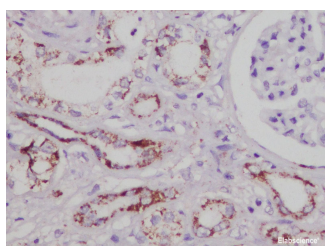


Western blot with SOD2 Polyclonal antibody at dilution of 1:1000.lane 1:SH-SY5Y whole cell lysate,lane 2:HeLa whole cell lysate

Observed Mw:25 kDa
Calculated Mw:25 kDa



Western blot with SOD2 Polyclonal antibody at dilution of 1:1000.lane 1:Mouse brain,lane 2:Mouse heart,lane 3:Rat brain,lane 4:Rat heart



Immunohistochemistry of paraffinembedded Human kidney using SOD2 Polyclonal Antibody at dilution of 1:800

Preparation & Storage

Storage	Store at -20°C Valid for 12 months. Avoid freeze / thaw cycles.
Shipping	The product is shipped with ice pack,upon receipt,store it immediately at the temperature recommended.

Background

For Research Use Only

A Reliable Research Partner in Life Science and Medicine

Toll-free: 1-888-852-8623

Web: www.elabscience.com

Tel: 1-832-243-6086

Email: techsupport@elabscience.com

Fax: 1-832-243-6017

SOD2 Polyclonal Antibody

Catalog Number:D-AB-10436L



Superoxide dismutases (SOD) are important anti-oxidant enzymes that guard against superoxide toxicity. In humans,as in all mammals and most chordates,three forms of superoxide dismutase (SOD) are present: SOD1 is located in the cytoplasm,SOD2 in the mitochondria,and SOD3 is extracellular. Mitochondrial superoxide dismutase [SOD;manganese SOD (MnSOD) or SOD2] neutralizes highly reactive superoxide radical ($O\bullet-2$),the first member in the plethora of mitochondrial reactive oxygen species.

For Research Use Only

A Reliable Research Partner in Life Science and Medicine

Toll-free: 1-888-852-8623

Web: www.elabscience.com

Tel: 1-832-243-6086

Email: techsupport@elabscience.com

Fax: 1-832-243-6017