

MBL2/MBP-C Polyclonal Antibody

Catalog Number:D-AB-10438L



Note: Centrifuge before opening to ensure complete recovery of vial contents.

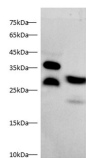
Description

Reactivity	Human,Mouse,Rat
Immunogen	Recombinant Human MBL2/MBP-C protein expressed by E.coli
Host	Rabbit
Isotype	IgG
Purification	Antigen Affinity Purification
Conjugation	Unconjugated
Formulation	PBS with 0.02% sodium azide,1% protective protein and 50% glycerol,pH7.4

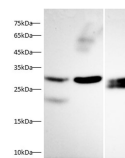
Applications Recommended Dilution

WB	1:500-1:1000
-----------	--------------

Data



Western blot with MBL2/MBP-C Polyclonal antibody at dilution of 1:1000.lane 1:Human plasma,lane 2:HepG2 whole cell lysate
Observed Mw:26 kDa
Calculated Mw:26 kDa



Western blot with MBL2/MBP-C Polyclonal antibody at dilution of 1:1000.lane 1:Mouse liver,lane 2:Mouse kidney,lane 3:Rat kidney

Preparation & Storage

Storage	Store at -20°C Valid for 12 months. Avoid freeze / thaw cycles.
Shipping	The product is shipped with ice pack,upon receipt,store it immediately at the temperature recommended.

Background

Mannose-binding Lectin (MBL) is an acute phase protein bearing to the family of collectins produced by the liver as a monomer that forms a triple helix. Once released in serum,it further polymerizes forming dimers to octamers. The degree of serum polymerization is critical for the biological activity of MBL. MBL has higher affinity to microbial polysaccharides or their glycoconjugates. MBL was shown earlier to bind cell surfaces of bacteria,fungi,protozoa and viruses and acts as an acute-phase plasma protein (APP) during infection and inflammation. MBL activates the lectin-complement pathway,promotes opsonophagocytosis and modulates inflammation.

For Research Use Only

A Reliable Research Partner in Life Science and Medicine

Toll-free: 1-888-852-8623

Web: www.elabscience.com

Tel: 1-832-243-6086

Email: techsupport@elabscience.com

Fax: 1-832-243-6017