

SFTPD/SP-D Polyclonal Antibody

Catalog Number:D-AB-10441L



Note: Centrifuge before opening to ensure complete recovery of vial contents.

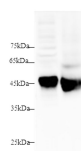
Description

Reactivity	Mouse,Rat
Immunogen	Recombinant Mouse SFTPD/SP-D protein expressed by Mammalian
Host	Rabbit
Isotype	IgG
Purification	Antigen Affinity Purification
Conjugation	Unconjugated
Formulation	PBS with 0.02% sodium azide,1% protective protein and 50% glycerol,pH7.4

Applications Recommended Dilution

WB	1:500-1:1000
-----------	--------------

Data



Western blot with SFTPD/SP-D Polyclonal antibody at dilution of 1:1000.lane 1:Mouse lung,lane 2:Rat lung

Observed Mw:45 kDa
Calculated Mw:38 kDa

Preparation & Storage

Storage	Store at -20°C Valid for 12 months. Avoid freeze / thaw cycles.
Shipping	The product is shipped with ice pack,upon receipt,store it immediately at the temperature recommended.

Background

Pulmonary surfactant-associated protein D (SP-D) is a 43 kDa member of the collectin family of innate immune modulators. Mouse SP-D cDNA encodes a 19 aa signal sequence and a 355 aa mature region with a 25 aa N-terminal linking-region,a 177 aa hydroxyproline and hydroxylysine collagen-like domain,a 46 aa coiled-coil segment,and a 106 aa,C-terminal collectin-like C-type lectin domain . SP-D is found in serum,plasma,broncho-alveolar lavage (BAL) fluid,and amniotic fluid. It also binds SIRP alpha and the calreticulin/CD91 complex on macrophages. SP-D contributes to the lung's defense against inhaled microorganisms,organic antigens and toxins. It Interacts with compounds such as bacterial lipopolysaccharides,oligosaccharides and fatty acids and modulates leukocyte action in immune response. It may participate in the extracellular reorganization or turnover of pulmonary surfactant. It binds strongly maltose residues and to a lesser extent other alpha-glucosyl moieties.

For Research Use Only

A Reliable Research Partner in Life Science and Medicine

Toll-free: 1-888-852-8623

Web: www.elabscience.com

Tel: 1-832-243-6086

Email: techsupport@elabscience.com

Fax: 1-832-243-6017