

# Lbp Polyclonal Antibody

Catalog Number:D-AB-10445L



**Note:** Centrifuge before opening to ensure complete recovery of vial contents.

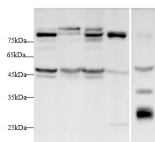
## Description

<b>Reactivity</b>	Human,Mouse,Rat
<b>Immunogen</b>	Recombinant Human Lbp protein expressed by Mammalian
<b>Host</b>	Rabbit
<b>Isotype</b>	IgG
<b>Purification</b>	Antigen Affinity Purification
<b>Conjugation</b>	Unconjugated
<b>Formulation</b>	PBS with 0.02% sodium azide,1% protective protein and 50% glycerol,pH7.4

## Applications Recommended Dilution

<b>WB</b>	1:500-1:1000
-----------	--------------

## Data



Western blot with Lbp Polyclonal antibody at dilution of 1:1000.lane 1:A431 whole cell lysate,lane 2:HEK-293T whole cell lysate,lane 3:HepG2 whole cell lysate,lane 4:Mouse liver,lane 5:Rat serum

**Observed Mw:55 kDa**  
**Calculated Mw:54 kDa**

## Preparation & Storage

<b>Storage</b>	Store at -20°C Valid for 12 months. Avoid freeze / thaw cycles.
<b>Shipping</b>	The product is shipped with ice pack,upon receipt,store it immediately at the temperature recommended.

## Background

Lipopolysaccharide-binding protein(LBP),a 58kDa glycoprotein synthesized in hepatocytes,belongs to a family of lipid-binding proteins that includes bactericidal/permeability increasing protein(BPI),phospholipid ester transfer protein(PLTP),and cholesterol ester transfer protein(CETP). LBP binds to the lipidA portion of lipopolysaccharide(LPS) to facilitate the process of LPS monomerization,catalyzes the binding of LPS monomers to CD14,and promotes LPS-induced immune response.

## For Research Use Only

A Reliable Research Partner in Life Science and Medicine

Toll-free: 1-888-852-8623

Web: [www.elabscience.com](http://www.elabscience.com)

Tel: 1-832-243-6086

Email: [techsupport@elabscience.com](mailto:techsupport@elabscience.com)

Fax: 1-832-243-6017