

Note: Centrifuge before opening to ensure complete recovery of vial contents.

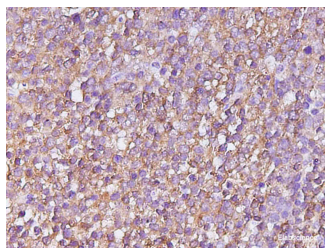
Description

| | |
|---------------------|--|
| Reactivity | Human,Mouse |
| Immunogen | Recombinant Human CASP4 protein expressed by E.coli |
| Host | Rabbit |
| Isotype | IgG |
| Purification | Antigen Affinity Purification |
| Conjugation | Unconjugated |
| Formulation | PBS with 0.02% sodium azide,1% protective protein and 50% glycerol,pH7.4 |

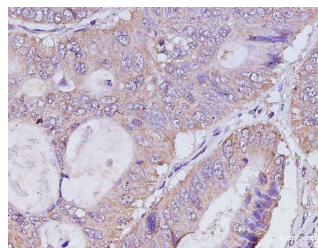
Applications Recommended Dilution

| | |
|------------|-------------|
| IHC | 1:400-1:800 |
| IF | 1:50-1:200 |

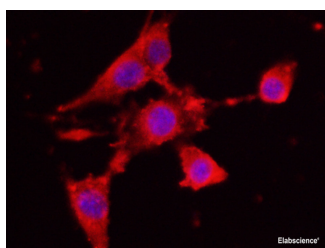
Data



Immunohistochemistry of paraffinembedded Human tonsil using CASP4 Polyclonal Antibody at dilution of 1:800



Immunohistochemistry of paraffinembedded Human colon cancer using CASP4 Polyclonal Antibody at dilution of 1:800



Immunofluorescence analysis of NIH-3T3 cells using CASP4 Polyclonal Antibody at dilution of 1:200

Preparation & Storage

| | |
|-----------------|--|
| Storage | Store at -20°C Valid for 12 months. Avoid freeze / thaw cycles. |
| Shipping | The product is shipped with ice pack,upon receipt,store it immediately at the temperature recommended. |

Background

This gene encodes a member of the cysteine proteases that plays important roles in apoptosis,cell migration and the inflammatory response. The encoded protein mediates production of pro-inflammatory cytokines by macrophages upon

For Research Use Only

A Reliable Research Partner in Life Science and Medicine

Toll-free: 1-888-852-8623

Web: www.elabscience.com

Tel: 1-832-243-6086

Email: techsupport@elabscience.com

Fax: 1-832-243-6017

CASP4 Polyclonal Antibody

Catalog Number:D-AB-10447L



bacterial infection. Mice lacking the encoded protein are resistant to endotoxic shock induced by lipopolysaccharide. A 5-bp deletion encompassing a splice acceptor junction resulting in alternate splicing and a shorter non-functional isoform in certain mouse strains has been described. Although its official nomenclature is "caspase 4,apoptosis-related cysteine peptidase",this gene and its encoded protein have historically been called caspase 11. This gene is present in a cluster of three caspase genes on chromosome 9.

For Research Use Only

A Reliable Research Partner in Life Science and Medicine

Toll-free: 1-888-852-8623

Tel: 1-832-243-6086

Fax: 1-832-243-6017

Web: www.elabscience.com

Email: techsupport@elabscience.com